

Last update : 08/13/2006

[General documentation](#)

[How to resize partition, step by step](#)

GPARTED-LIVECD DOCUMENTATION

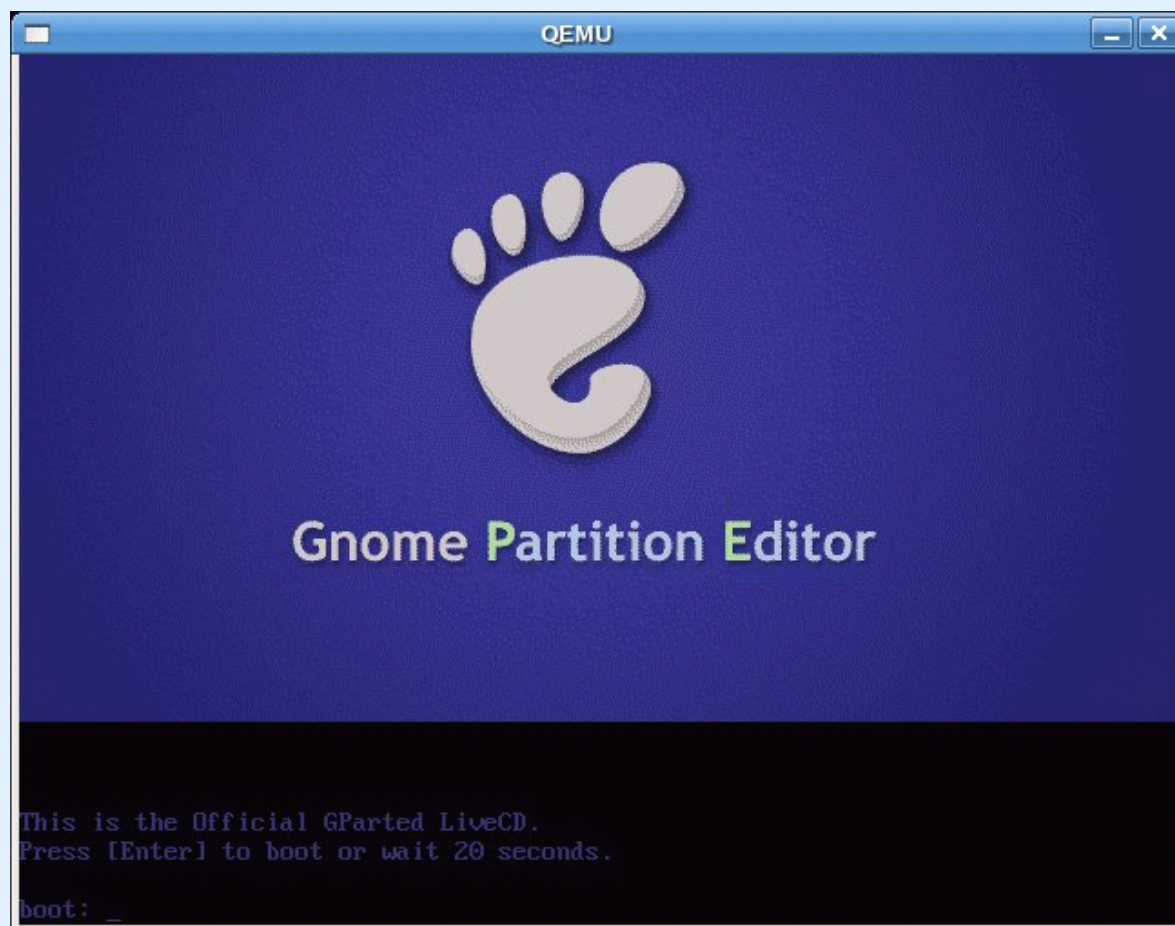
GParted-livecd 0.2.5-5

Please, first have a look at "introduction", from the [General documentation](#)

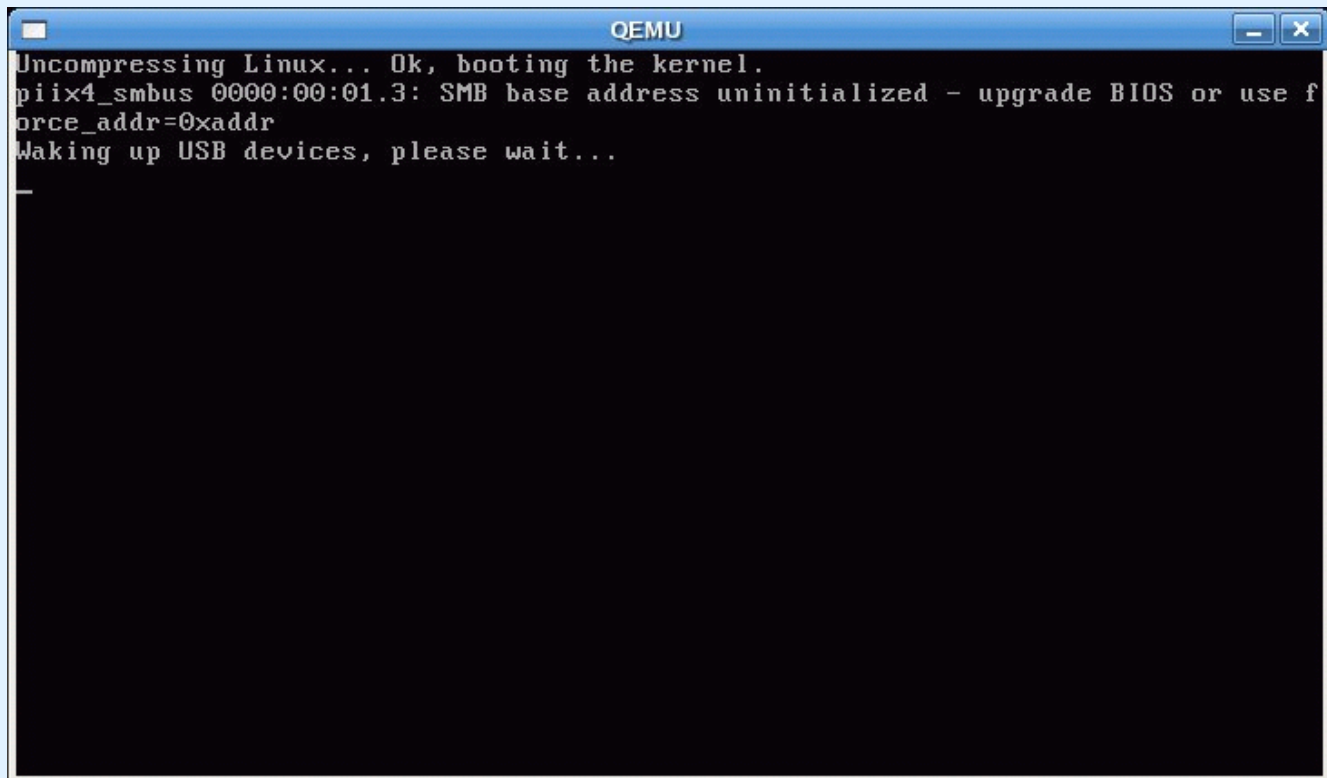
To use the GParted livecd, you must set up your bios to boot off cd !

Then put the cd in the drive once you have burnt the iso you have downloaded.

You will see this screen. There is a time delay of 20 seconds



Hit the ENTER key, or wait for delay...

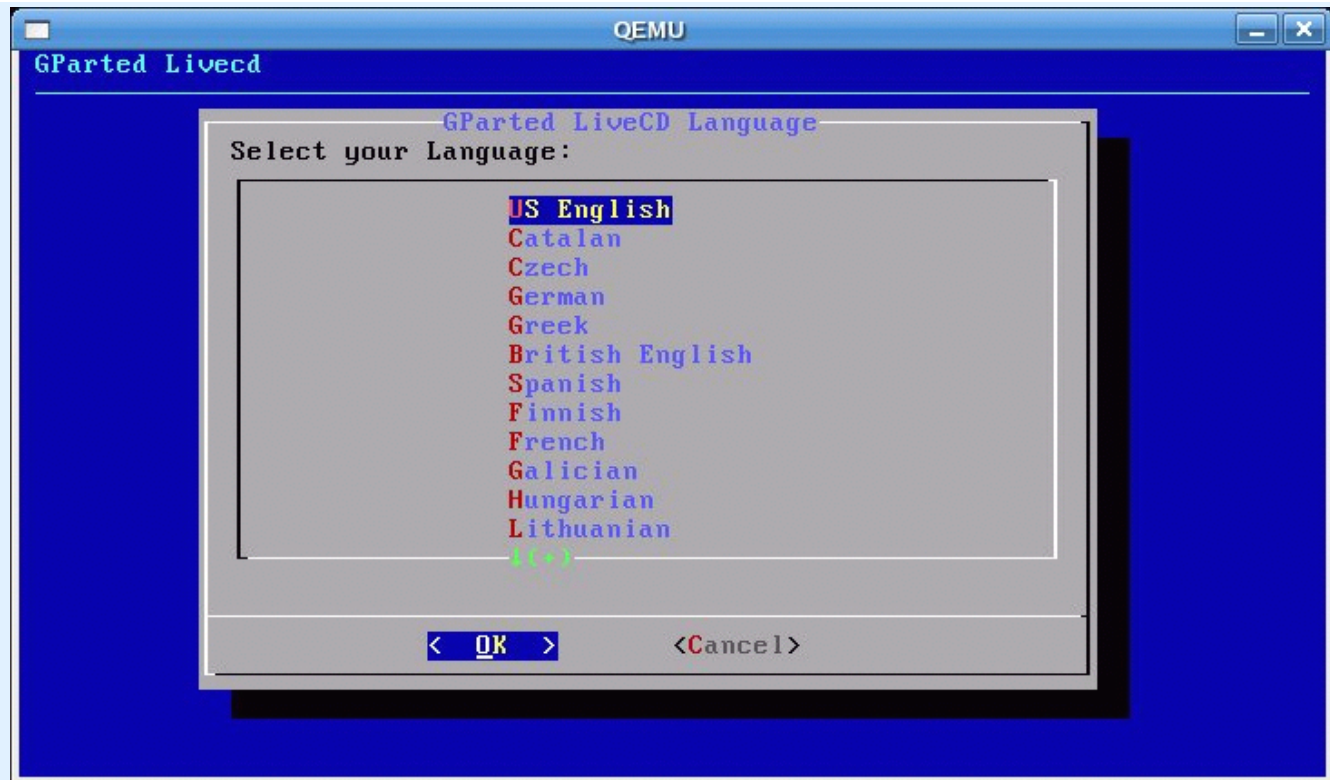


Do you need to load some modules ? If you do, click the one you need, and click on "**Done**" (last line) to continue.

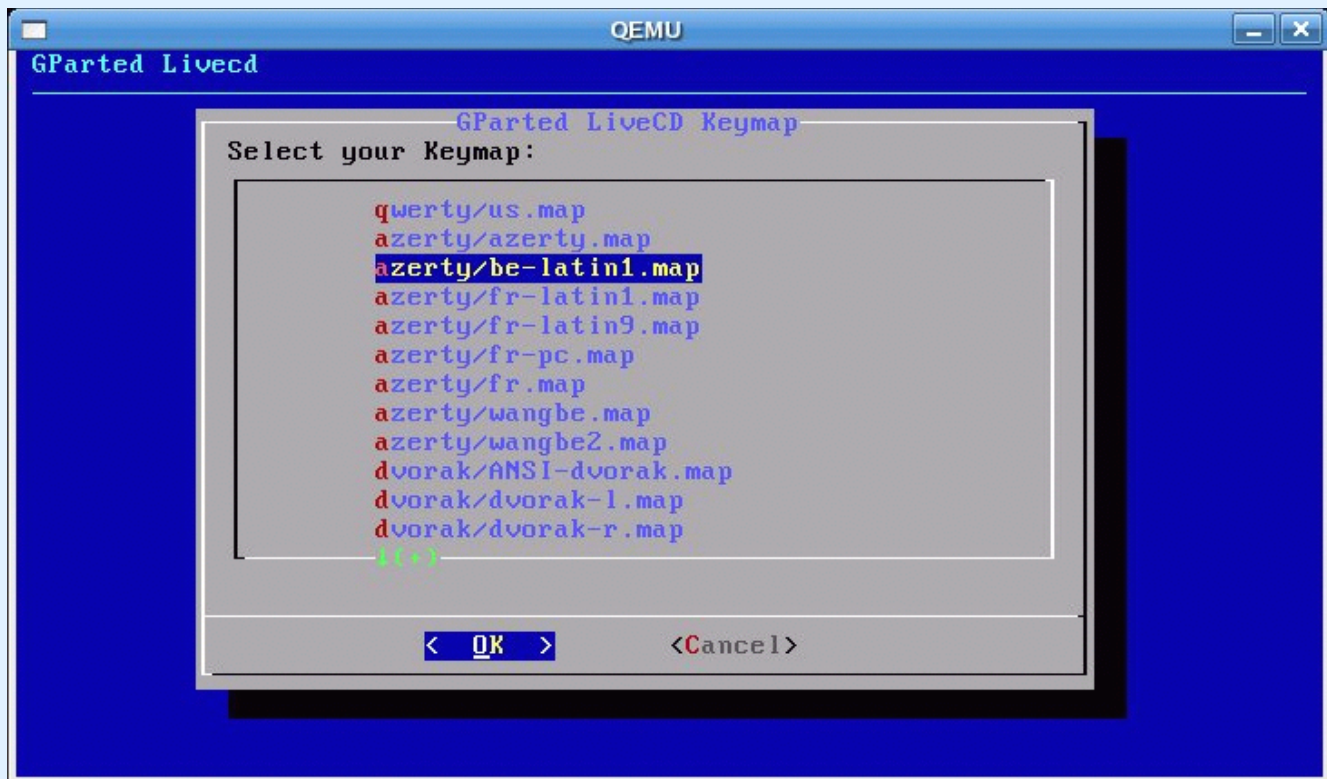


you are asked for features you want to use in the graphical mode....

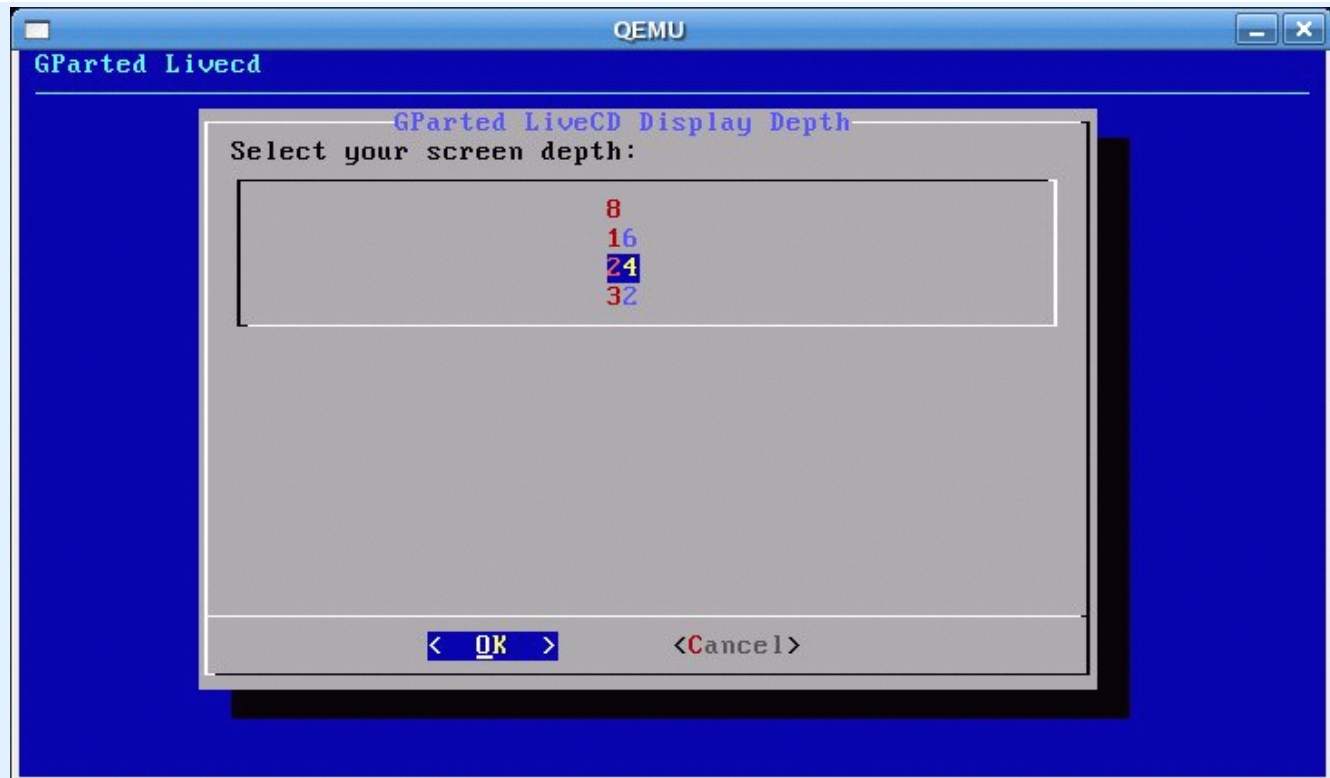
Language...



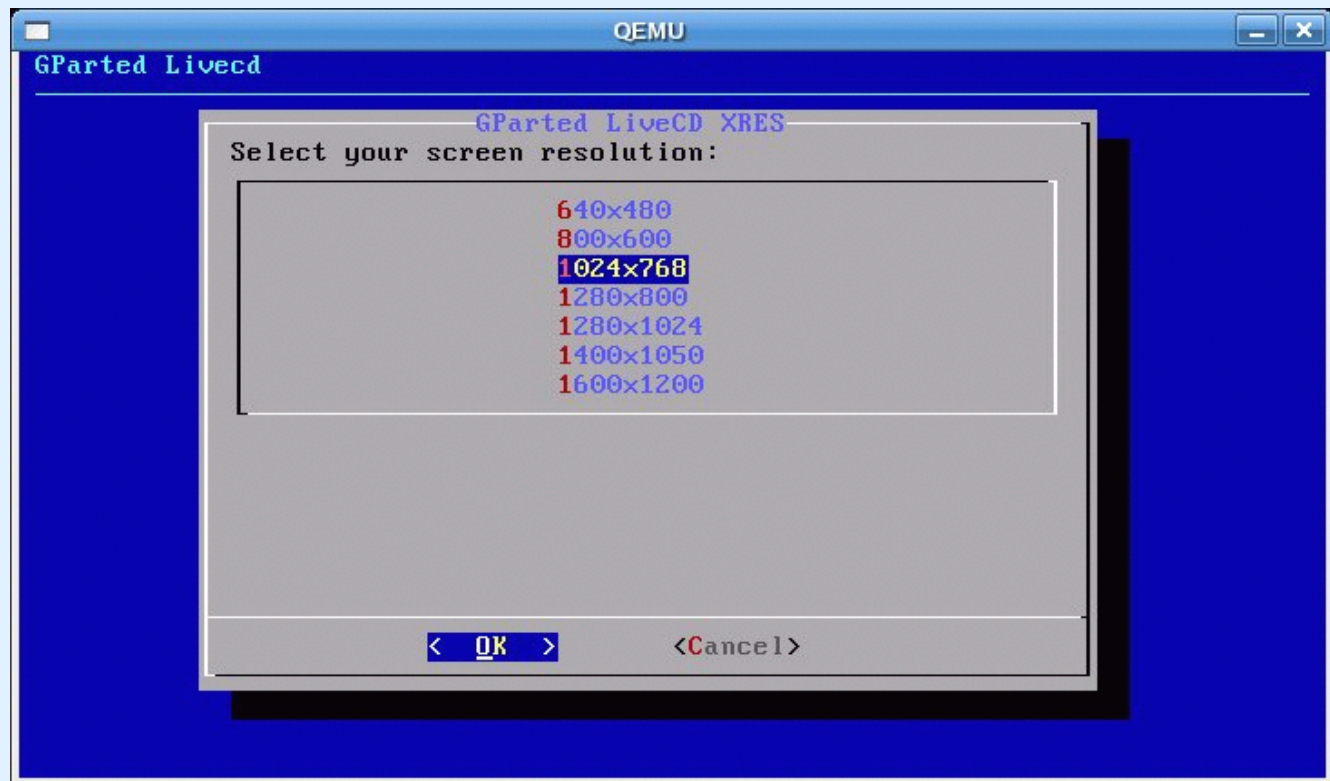
...keymap



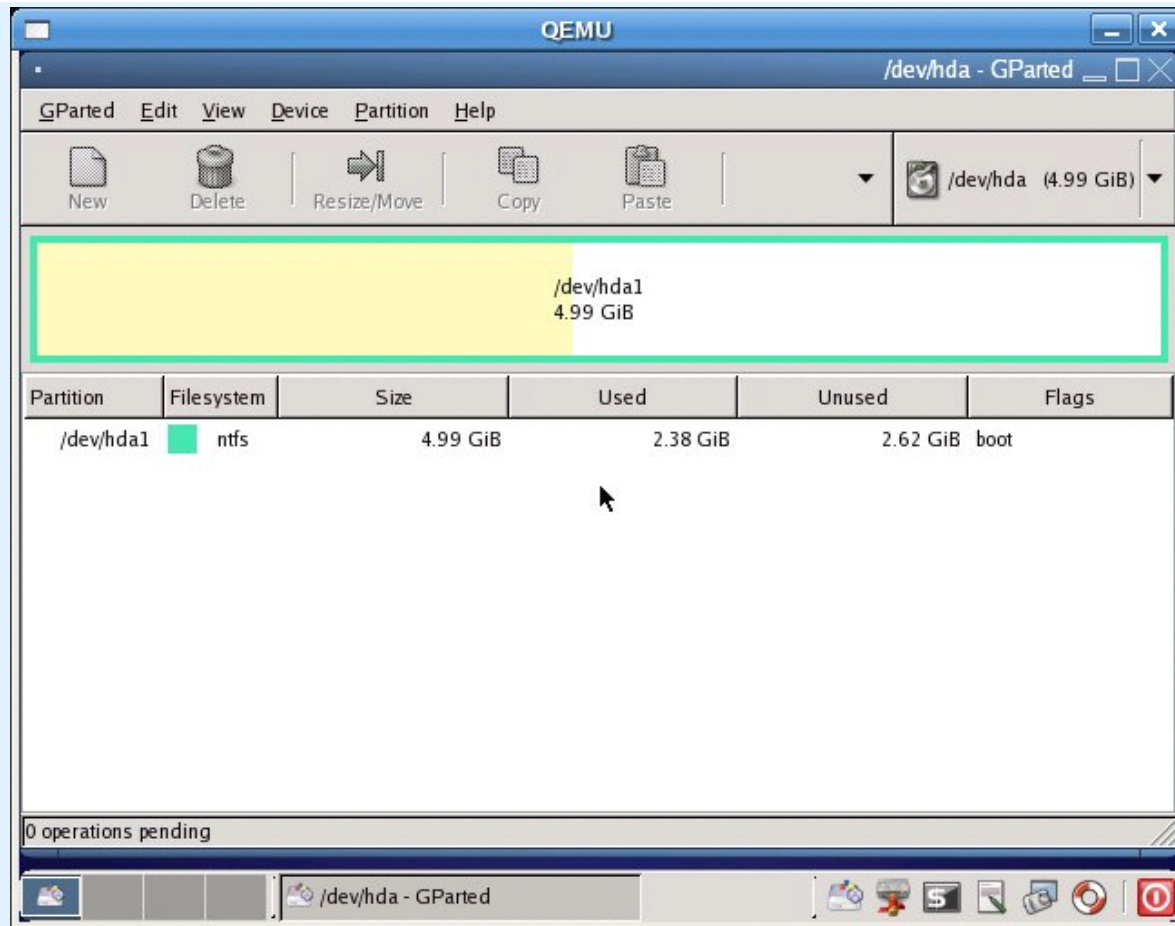
...screen depth



and resolution

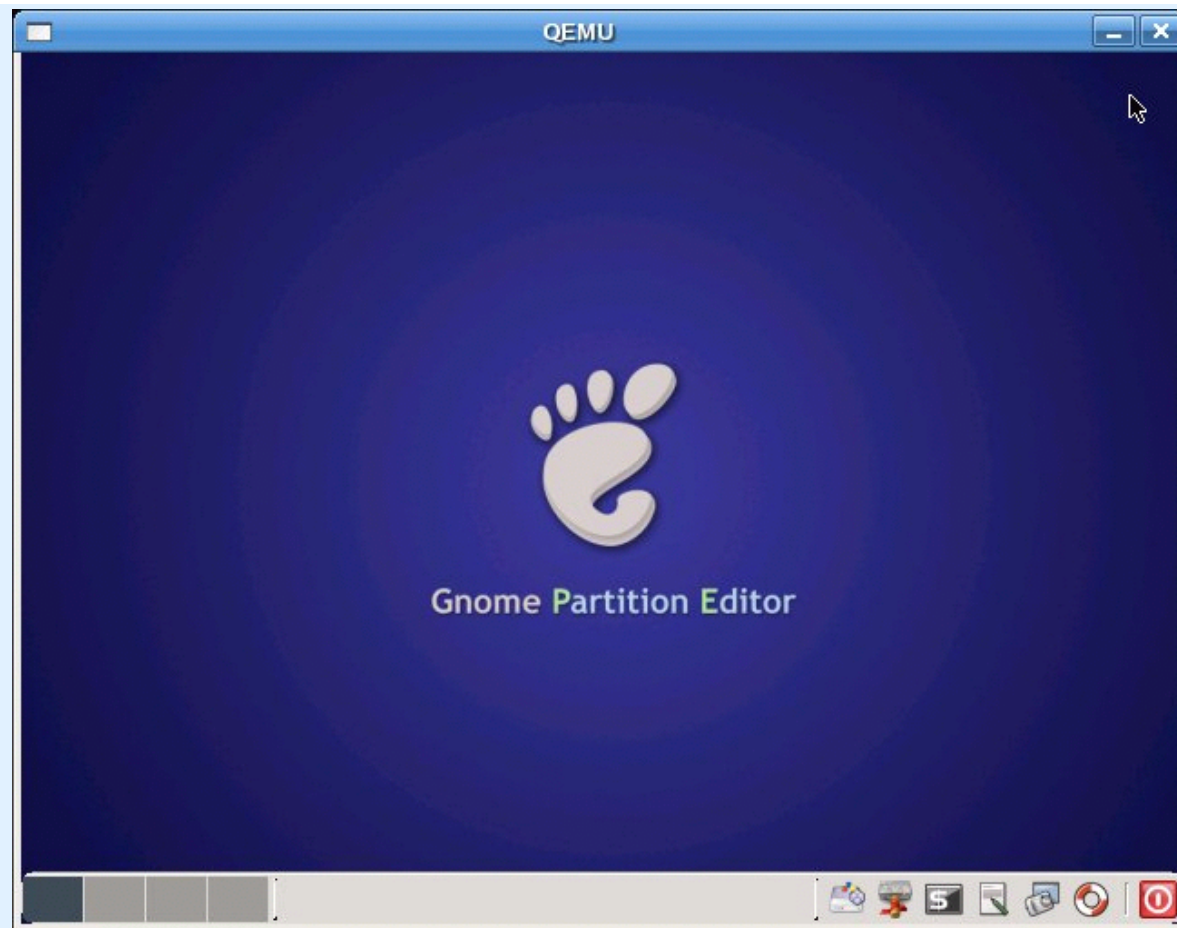


Once this is done, the graphical mode may start...



Details about operations can be found [there](#)

At the bottom, you find icon in the panel, to launch editor, screenshot tool...



After you have closed the windows you may click "**Reboot**"
...and the computer starts the reboot.