

# BOOTING FROM HARD DRIVE

Things needed:

A Lilo or GRUB boot loader installed and working.

The latest GParted LiveCD iso.

A working Linux Distro.

First we'll open the iso file with these commands:

```
patrick@gparted:~$mkdir iso
patrick@gparted:~$mount -o loop /path/to/iso/gparted-livecd-0.X.iso iso
patrick@gparted:~$cd iso
patrick@gparted:~/iso$ ls
gparted isolinux
```

I have decided to boot from my windows drive that is mounted on /mnt/windows:

```
patrick@gparted:~/iso$ cp -a * /mnt/windows
```

I need to update my boot loader so it can find the linux and initrd.gz files. My windows drive is /dev/hda1.

For GRUB add this to menu.lst:

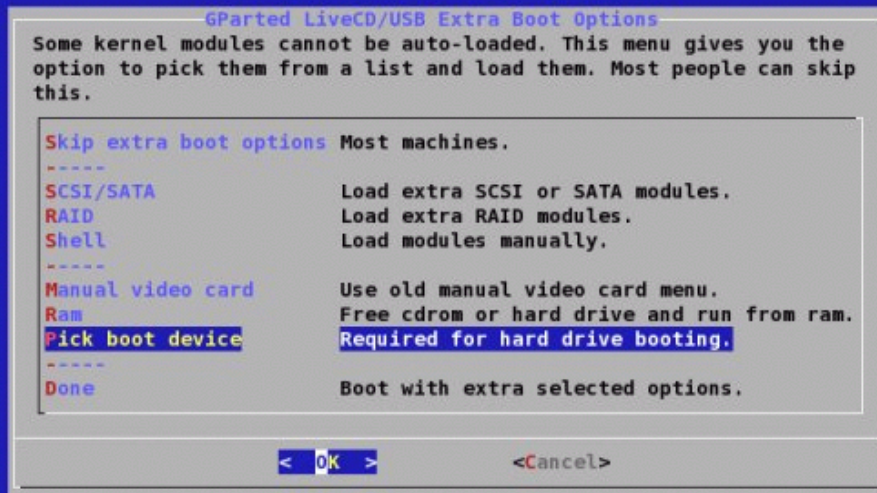
```
title Gparted
root (hd0,0)
kernel /isolinux/linux root=/dev/ram0 initrd=initrd.gz init=/linuxrc ramdisk_size=65000
initrd /isolinux/initrd.gz
```

For lilo add this to lilo.conf:

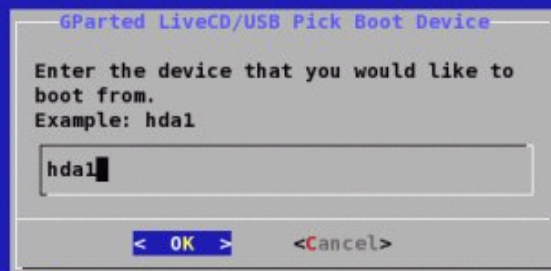
```
image= /mnt/windows/isolinux/linux
label = GParted
initrd = /mnt/windows/isolinux/initrd.g
append = "init=/linuxrc"
root = /dev/ram0
ramdisk=65000
```

Be sure to run /sbin/lilo!

Now reboot the computer and select GParted from the boot menu. When the GParted LiveCD/USB Extra Boot Options comes up select "Pick boot device".



Now type the name of the device to boot from.



After hitting "OK" we will be returned to the main menu. Select "Done" and the system will boot.

That's it!