

Last update : 07/25/2006

[General documentation](#)
[The livecd-howto](#)

HOW TO RESIZE PARTITION

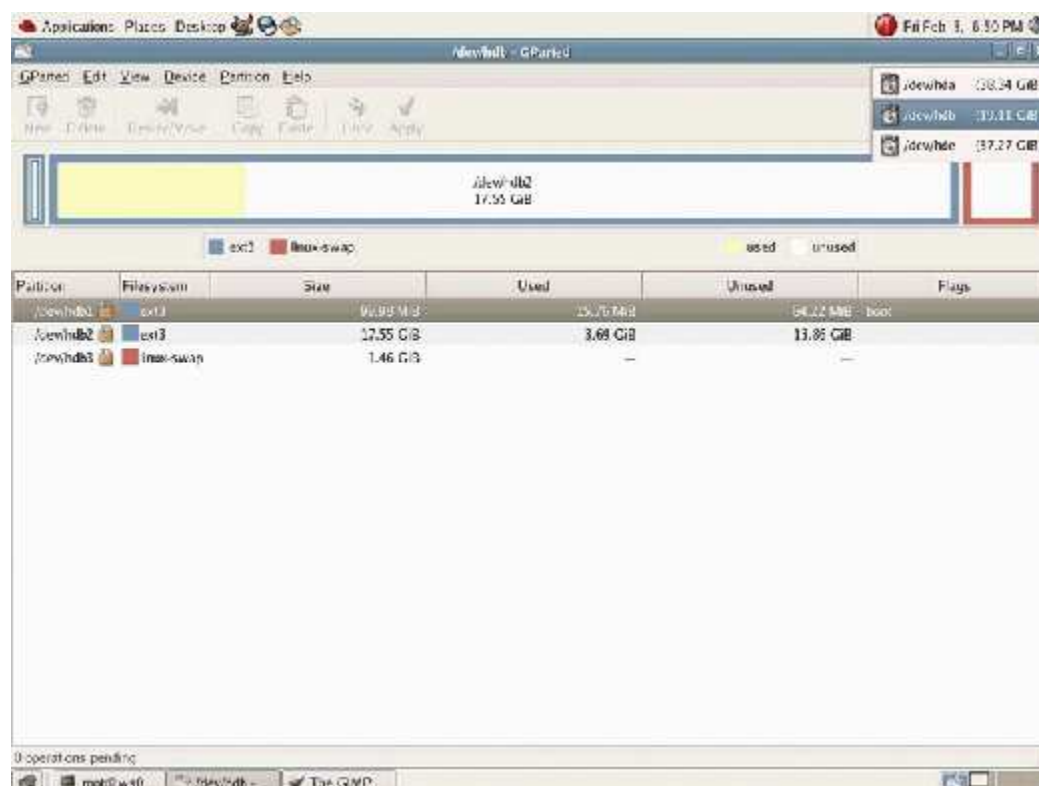
(The doc size is 2,4 MB) (Download [PDF](#), 738 ko)

Please, first have a look at "introduction", from the [General documentation](#)

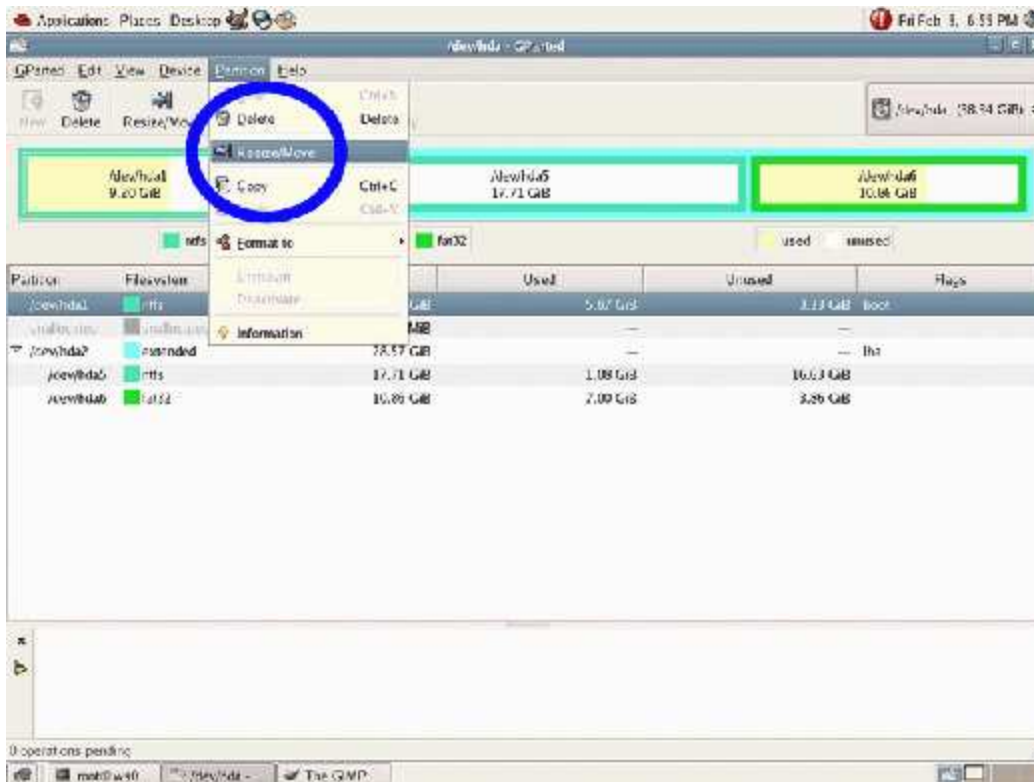
Running GParted from a Linux system is the same as running it from the livecd.

N.B : But if you run fedora core 5, and want to create a new partition on usb drive, you first must -- for the moment -- disable the automount fonction : open a shell and type "gnome-volume-properties", unckeck the first line, and close ; a best solution is in study ! If you have any workaround, please, send us your opinion...

a) At the top right-end of the screen there is a drop-down box where you can choose the hard disk you want to work on, if you have several hard drives on the PC/machine. Remember that this will only become operational after the scan is completed.



b) To select a partition click on it : here it is /dev/hda1. With the mouse click onto the **Partition** menu and choose **Resize-Move**.



c) So you choose to resize the /dev/hda1, which is a NTFS partition.

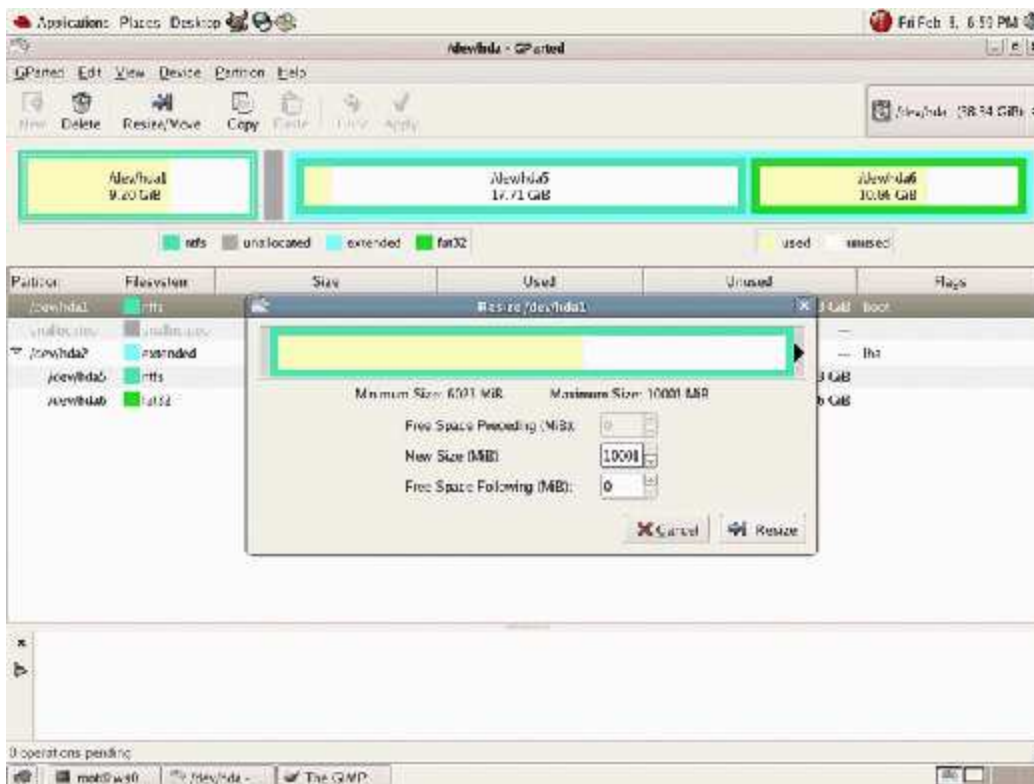


As you can see, the actual size is 9421 MB. To change the size, you can use the arrows, to grow up or reduce the partition.

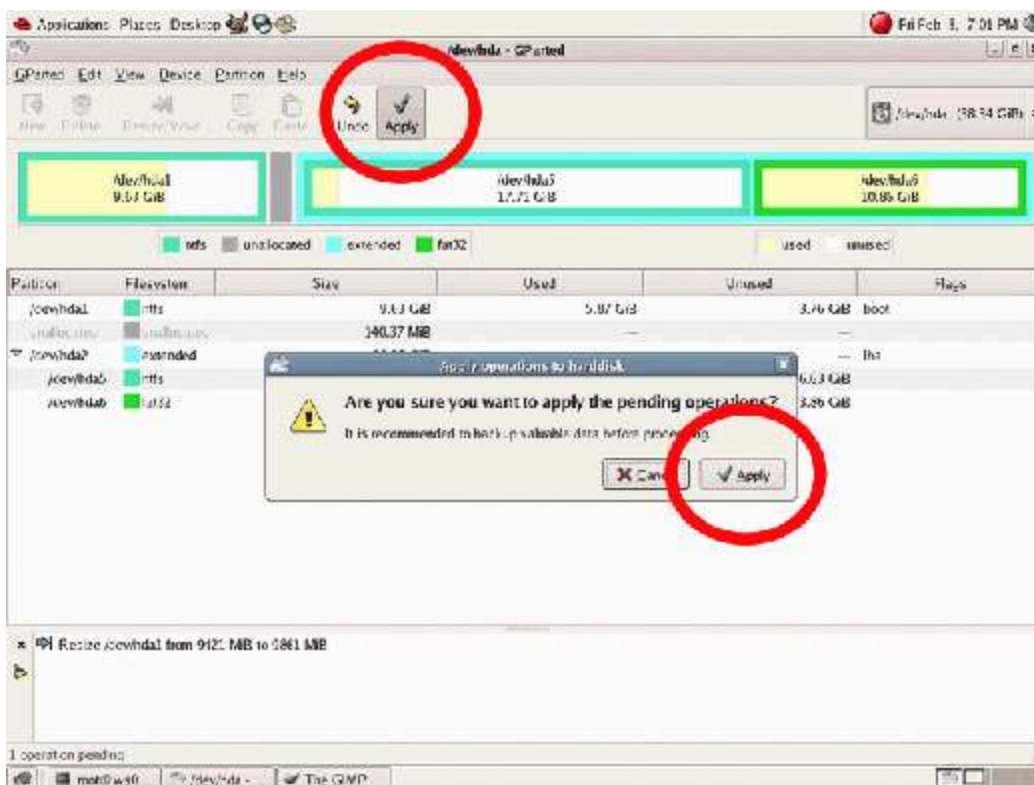
The mouse can also be used to move the black bold arrow to the left or to the right (inside the blue circle).

d) In this case you decide to grow the ntfs partition up :

The new size is now 10001 MB.



e) After the Resize command has been given, click on Apply.
No operations are given to the hard disk until you click Apply.



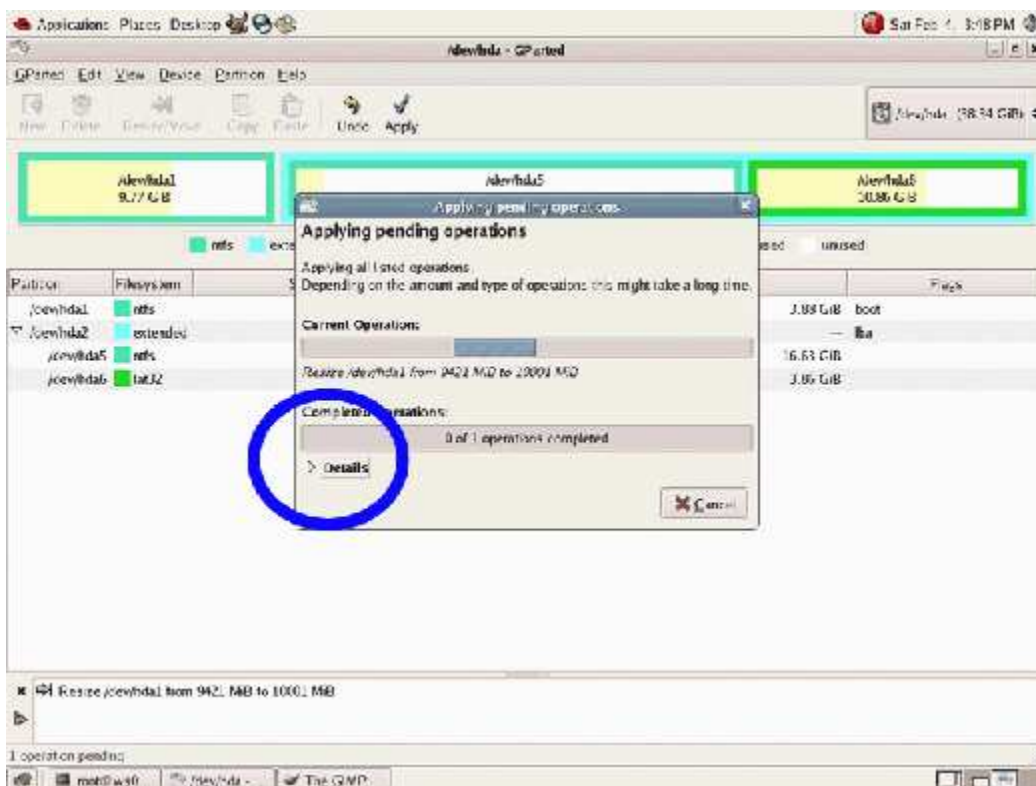
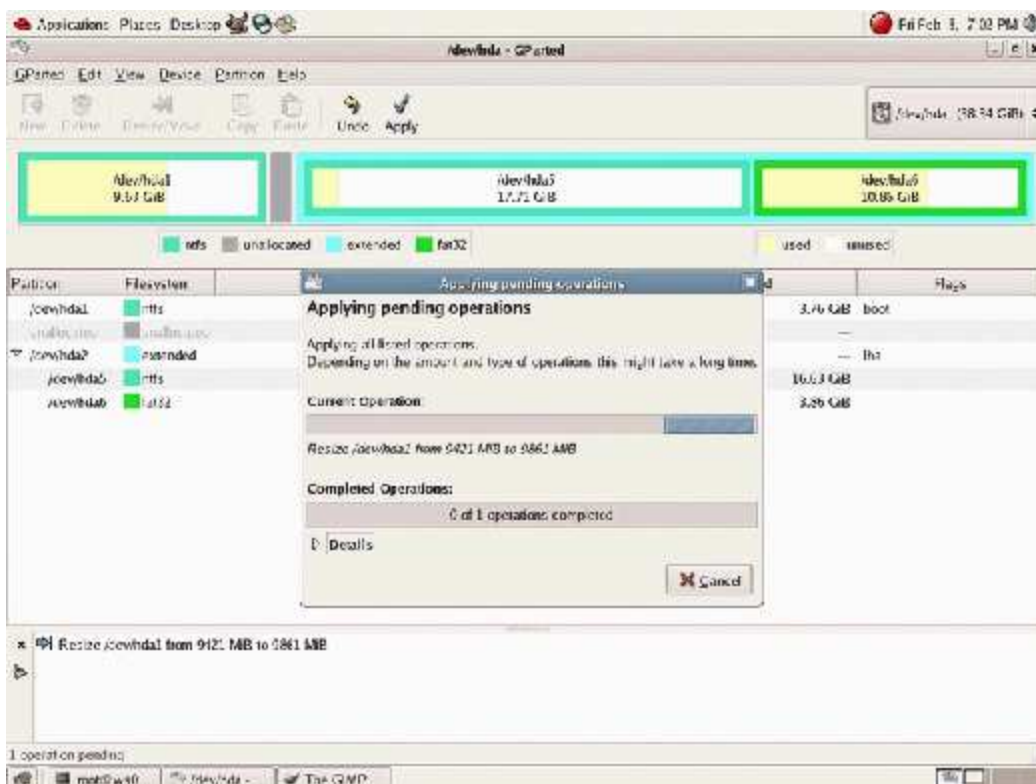
With the mouse click **Apply** button.

A new window appears, recommending you to backup data before performing the changes !

Then just click **Apply** once more.

f) Okay : now the fun begins :)

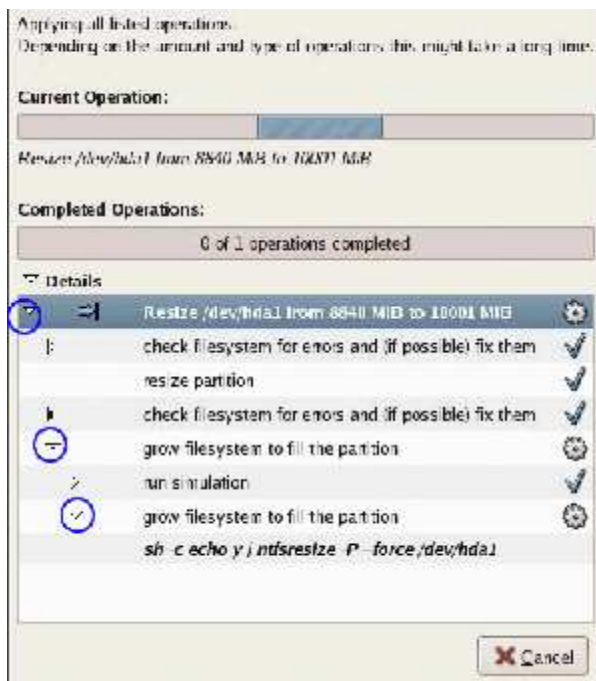
You may have a look on the running operations...



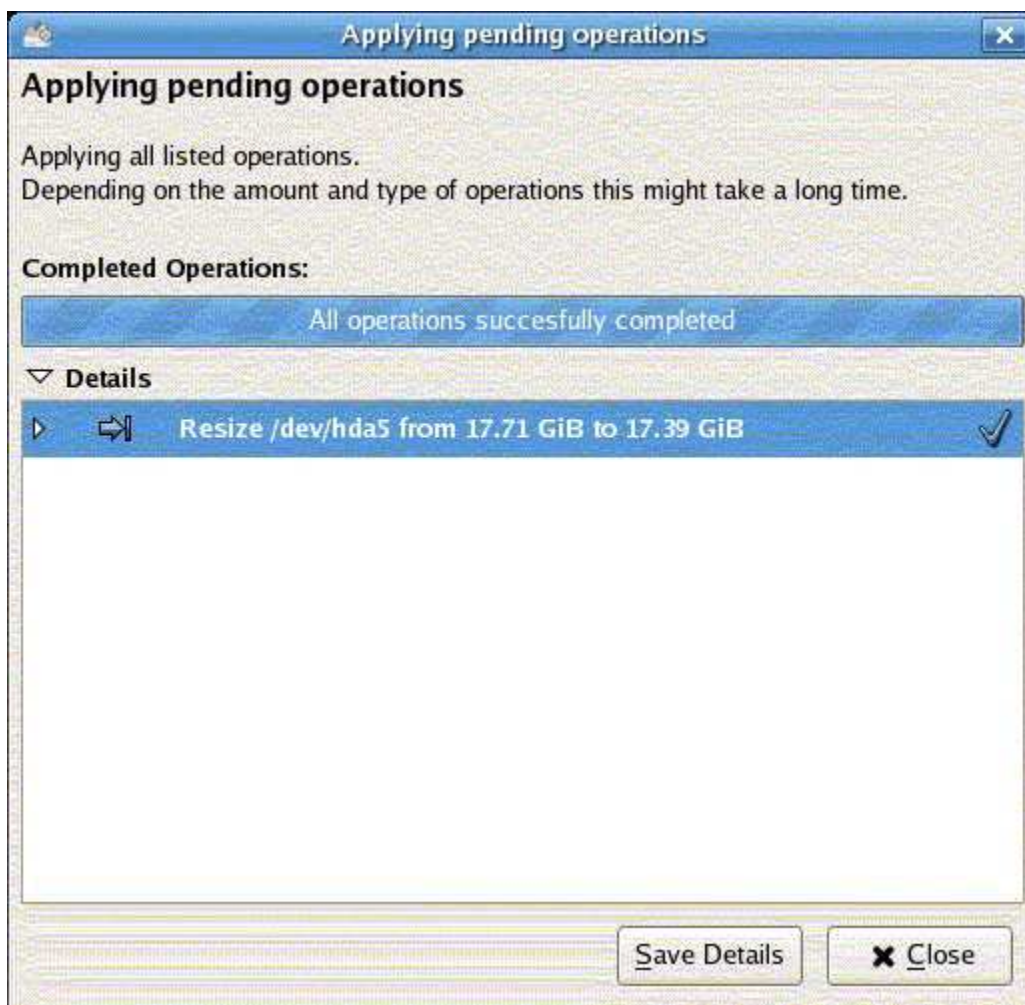
...By clicking on the Detail button. You will receive more information as to, where & how the changes are being made...

You may get more details about the running operations by clicking on the blue arrows circles...





g) The duration of the operations depends on the new size of the Partition.



"All operations successfully completed" ensures that everything worked perfectly.

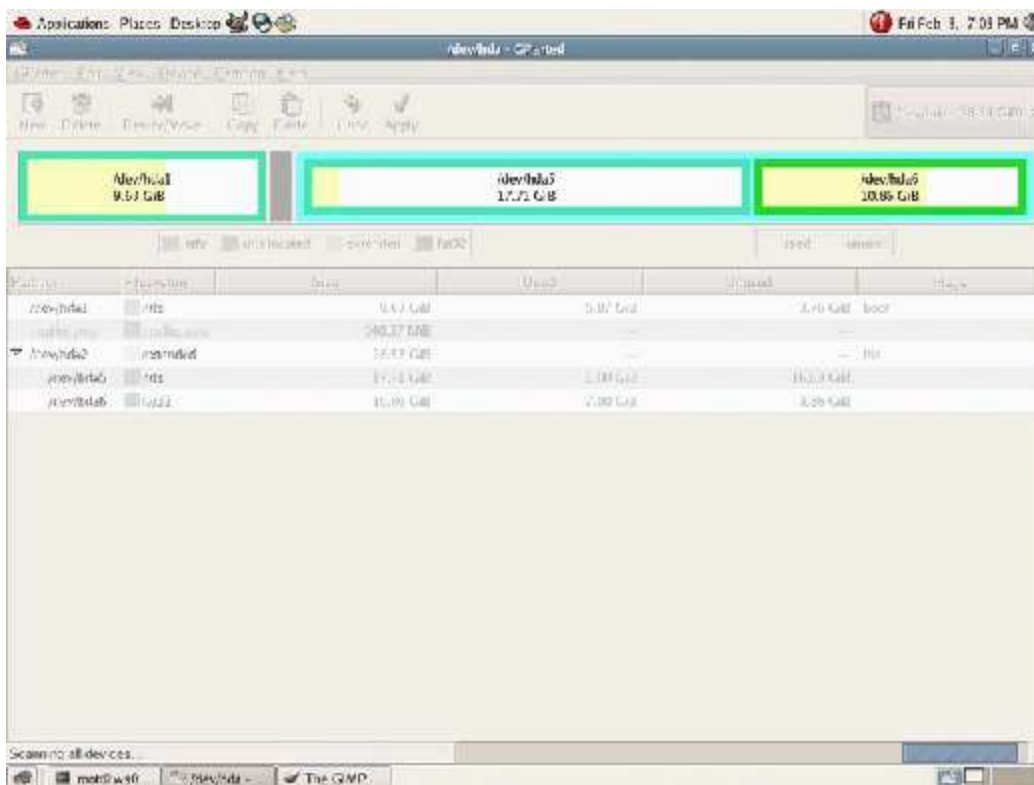
If something goes wrong, you can save the process output, by clicking on "Save Details"...

Just close the window.

When clicking on "Save Details", you are asked to where to save the file :

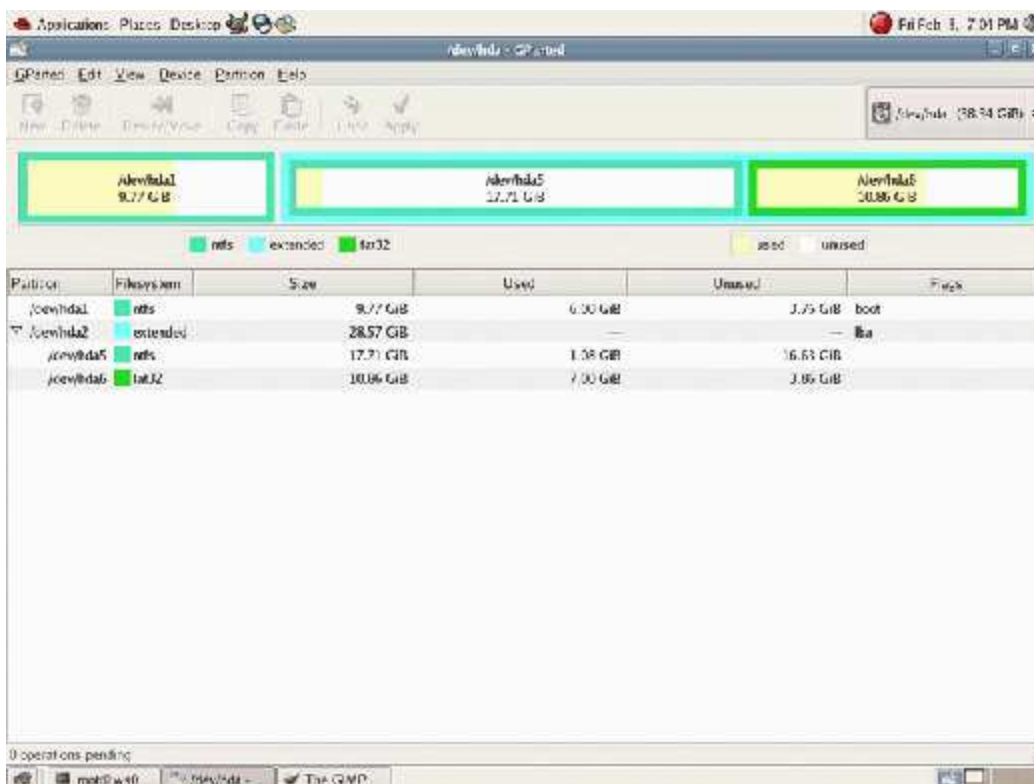


h) As there have been some changes to the partitions, Gparted again starts a new scan of the devices...

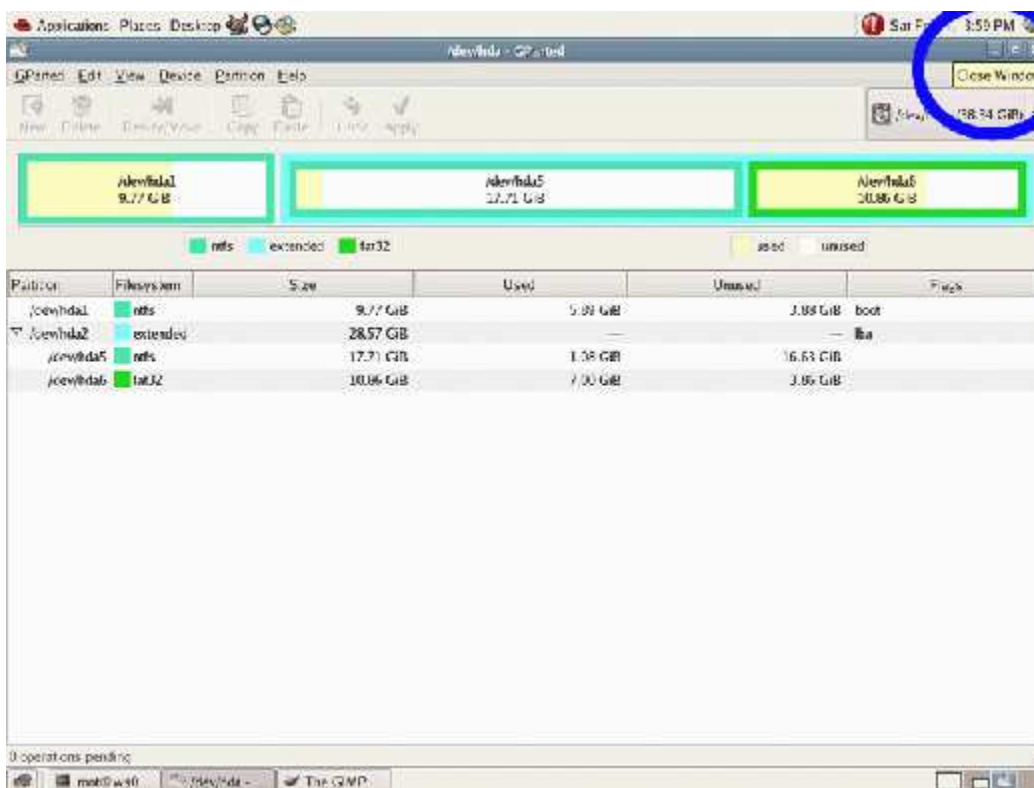


The process is running !

i) You are back to the first screen, with the enlarged ntfs partition on /dev/hda1



j) Before leaving Gparted make sure to close the window :)



Close gparted, by clicking on the cross (X) on the top extreme right on the screen.

(Screenshots have been built with [QEMU](#))

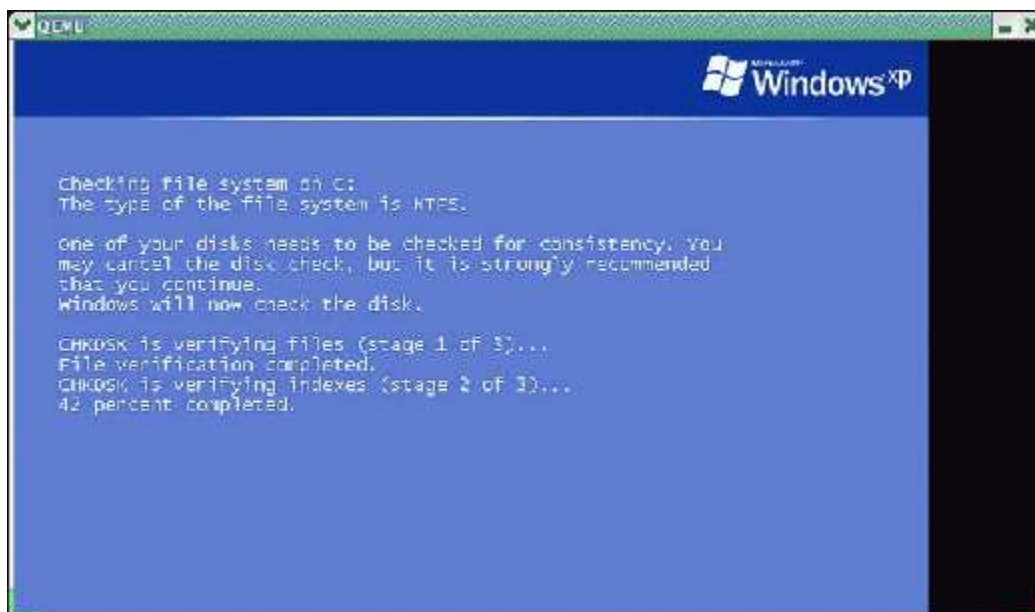
NTFS partition specification

Resizing NTFS partition impose you to reboot the system !

DON'T DO any other operations on this partition before the reboot, otherwise you will get errors. After the boot-up Windows logo, the system will show a special screen, and a message asking about drive consistency : *Checking file system on c :*



Let the AUTOCHK run : NT needs to check its file system after the resize operation.



At the end of the process, the computer will automatically restart for the second time. This ensures that things run perfectly.



```
QEMU
Microsoft Windows XP

CHKDSK is verifying files (stage 1 of 3)...
File verification completed.
CHKDSK is verifying indexes (stage 2 of 3)...
Index verification completed.
CHKDSK is verifying security descriptors (stage 3 of 3)...
Security descriptor verification completed.

3686880 KB total disk space.
2550616 KB in 10554 files.
 2640 KB in 683 indexes.
   0 KB in bad sectors.
 40028 KB in use by the system.
 28208 KB occupied by the log file.
1093596 KB available on disk.

 4096 bytes in each allocation unit.
 921720 total allocation units on disk.
273399 allocation units available on disk.

Windows has finished checking your disk.
Please wait while your computer restarts.
```

After restart, Windows XP will be okay, but you must let the system finish the boot and wait for the login screen !