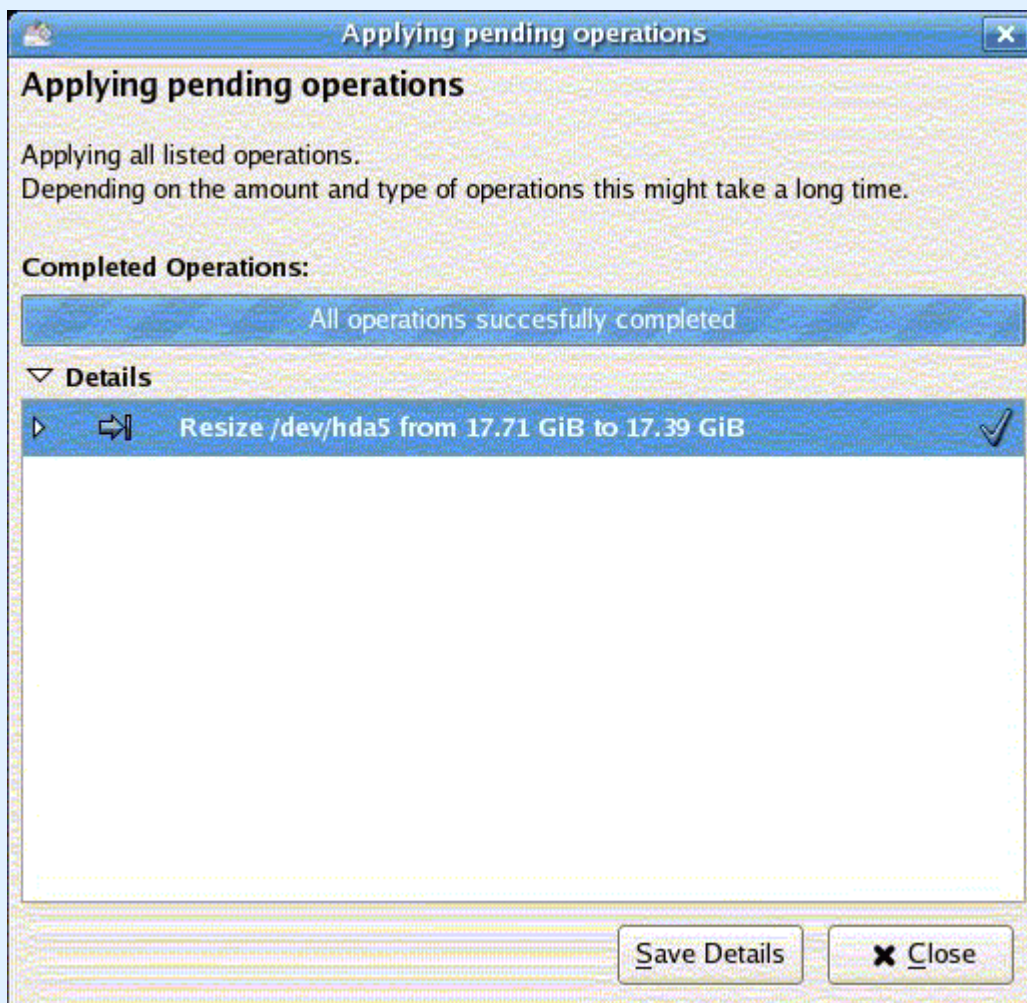
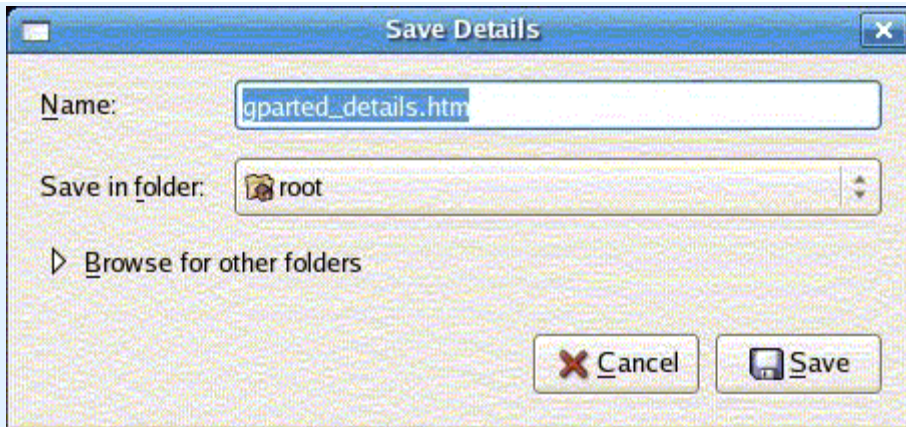


# SAVING DETAILS FOR BUGREPORT (and doing screenshots)

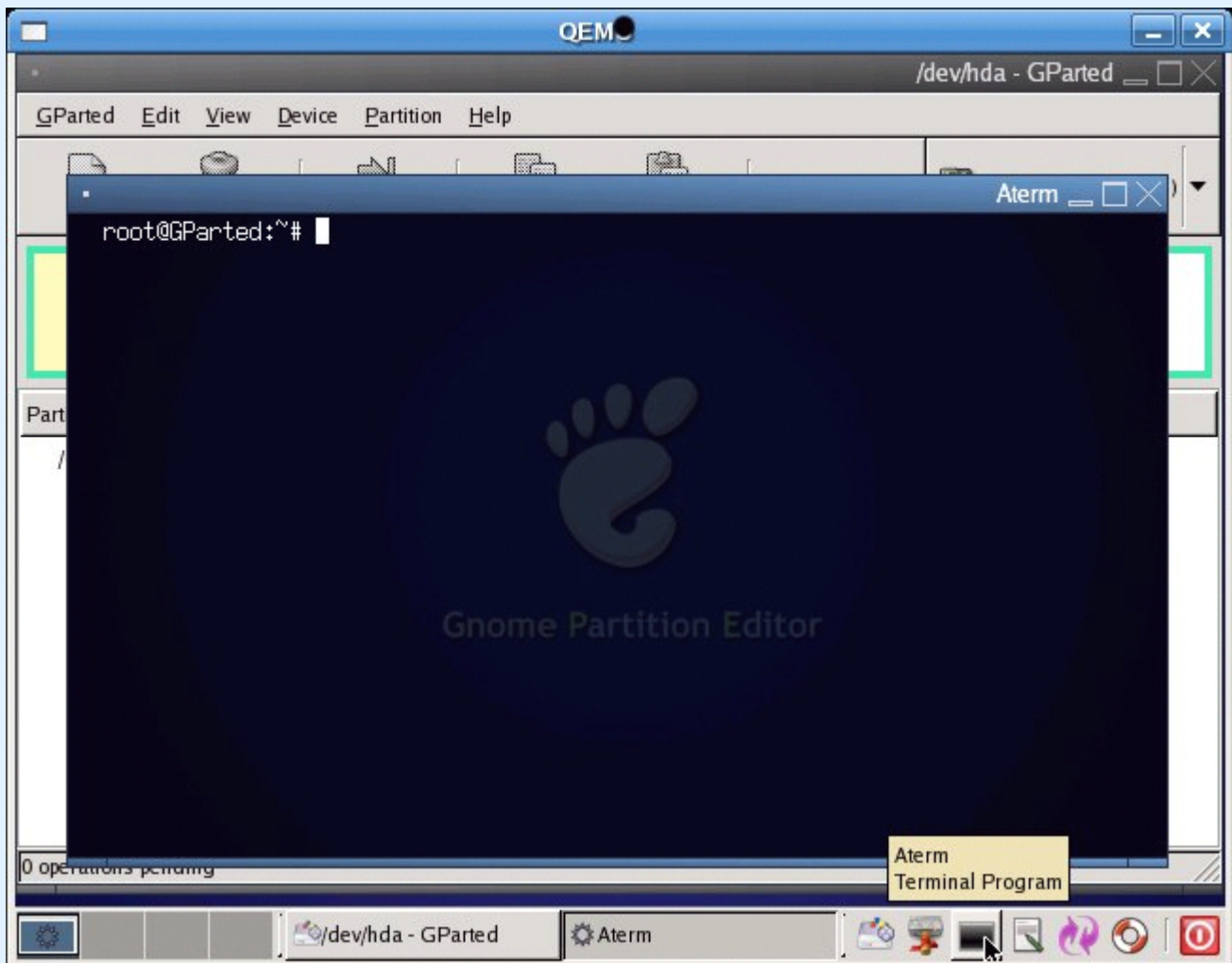


When clicking on "Save Details", you are asked where to save the file :



Here are several ways to get the file out of the environment. We will discuss the more common ways, copy to floppy, usbstick and harddisk.

First you need to open a terminal; DON'T CLOSE the GParted window!



### Copying to floppy disk

Insert your floppy, and just type the following :

```
root@GParted:~# mkdir /tmp/floppy
root@GParted:~# mount /dev/fd0 /tmp/floppy
root@GParted:~# cp gparted_details.htm /tmp/floppy
root@GParted:~# umount /tmp/floppy
root@GParted:~#
### If there is an error, or if there is no /dev/fd0, just do the following :
root@GParted:~# modprobe floppy
### And then execute the already described steps
```

### Copying to usbstick

Plug your usbstick in, and just type the following :

```
root@GParted:~# fdisk -l | grep sd

Disk /dev/sda: 131 MB, 131072000 bytes
255 heads, 63 sectors/track, 15 cylinders
Units = cylinders of 16065 * 512 = 8225280 bytes

   Device Boot      Start         End      Blocks   Id  System
/dev/sda1            1           15     120456   b   W95 FAT32

root@GParted:~#
```

It may return more than one sd\* device, if you have sata or scsi drives ; but when you look at the size, you can surely find the right device for your usbstick. Here it is /dev/sda, and the partition on which we will copy the file, is sda1.

So just do the following :

```
root@GParted:~# mkdir /tmp/usb
root@GParted:~# mount /dev/sda1 /tmp/usb/
root@GParted:~# cp gparted_details.htm /tmp/usb/
root@GParted:~# umount /tmp/usb
root@GParted:~#
```

Now, you can exit from the terminal with a ctrl-d, and exit from GParted and reboot your machine.

## Copying to hard drive partition

It is exactly the same as for an usbstick, but you can chose the partition in the GParted window! Imagine we decide to mount /dev/hda3 (which is the "/" partition) and to copy the gparted\_details.htm to it:

```
root@GParted:~# mkdir /tmp/hda
root@GParted:~# mount /dev/hda3 /tmp/hda/
root@GParted:~# cp gparted_details.htm /tmp/hda3/home/<your-path>/Desktop/
root@GParted:~# umount /tmp/hda/
root@GParted:~#
```

You may prefer to write to ntfs partition! Imagine we have an NTFS partition hda1 :

```
root@GParted:~# mkdir /tmp/ntfs
root@GParted:~# ntfs-3g /dev/hda1 /tmp/ntfs
root@GParted:~# cp gparted_details.htm /tmp/hda1/home/<your-path>/Desktop/
root@GParted:~# umount /tmp/ntfs
root@GParted:~#
```

Everything is done, and you can close the terminal (ctrl d) and reboot your machine!

## Doing screenshots

If you need or want to make a screenshot of the GParted window, just open a terminal and run the next command:

```
root@GParted:~# xwd > gparted.dmp
```

Then, switch to the GParted window using the alt+tab keys, and click on the GParted window. It will creat a gparted.dmp file in /root. And you may copy it to any drive executing the already described steps. DMP files can be opened with *gimp* or any *imageviewer*.