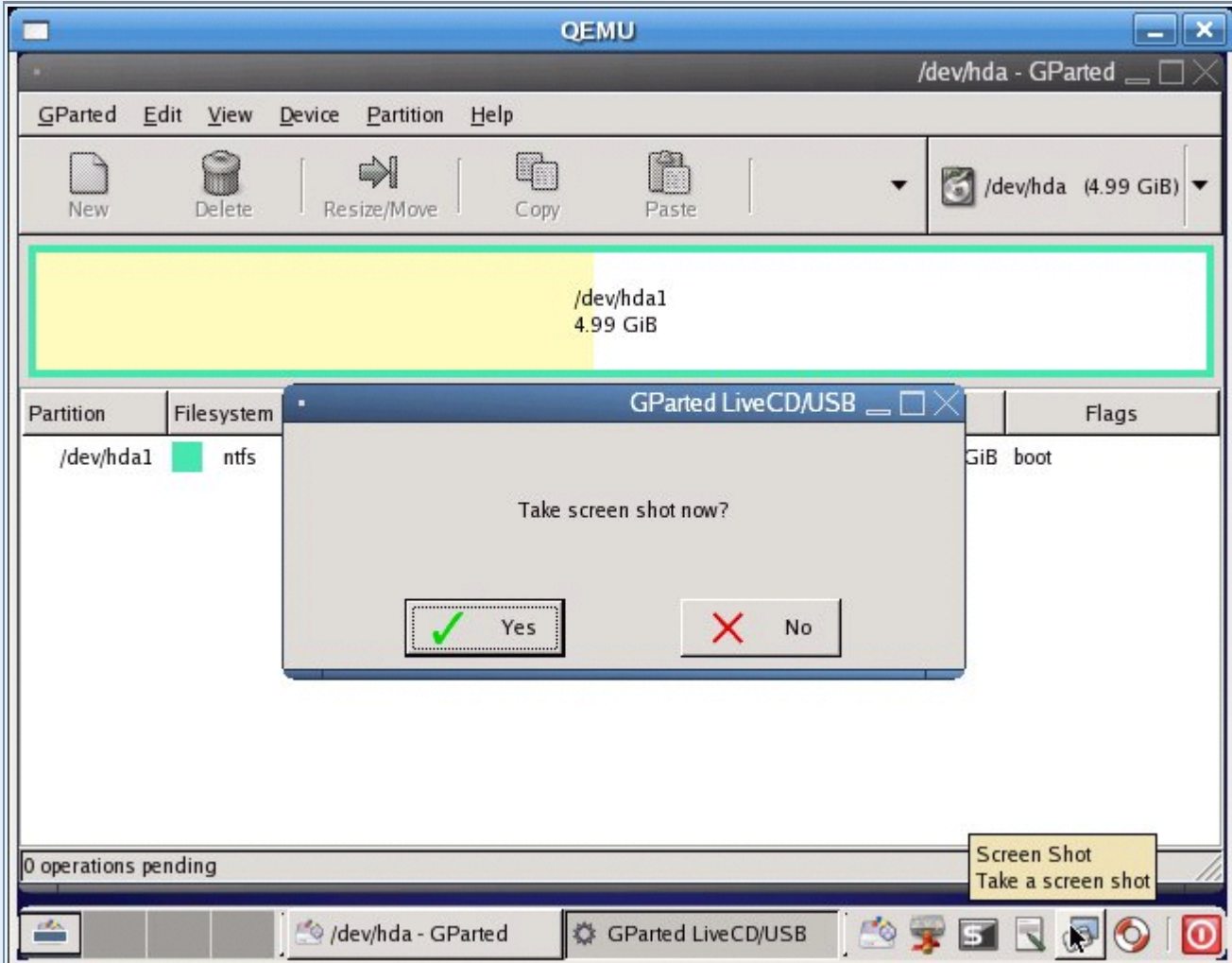
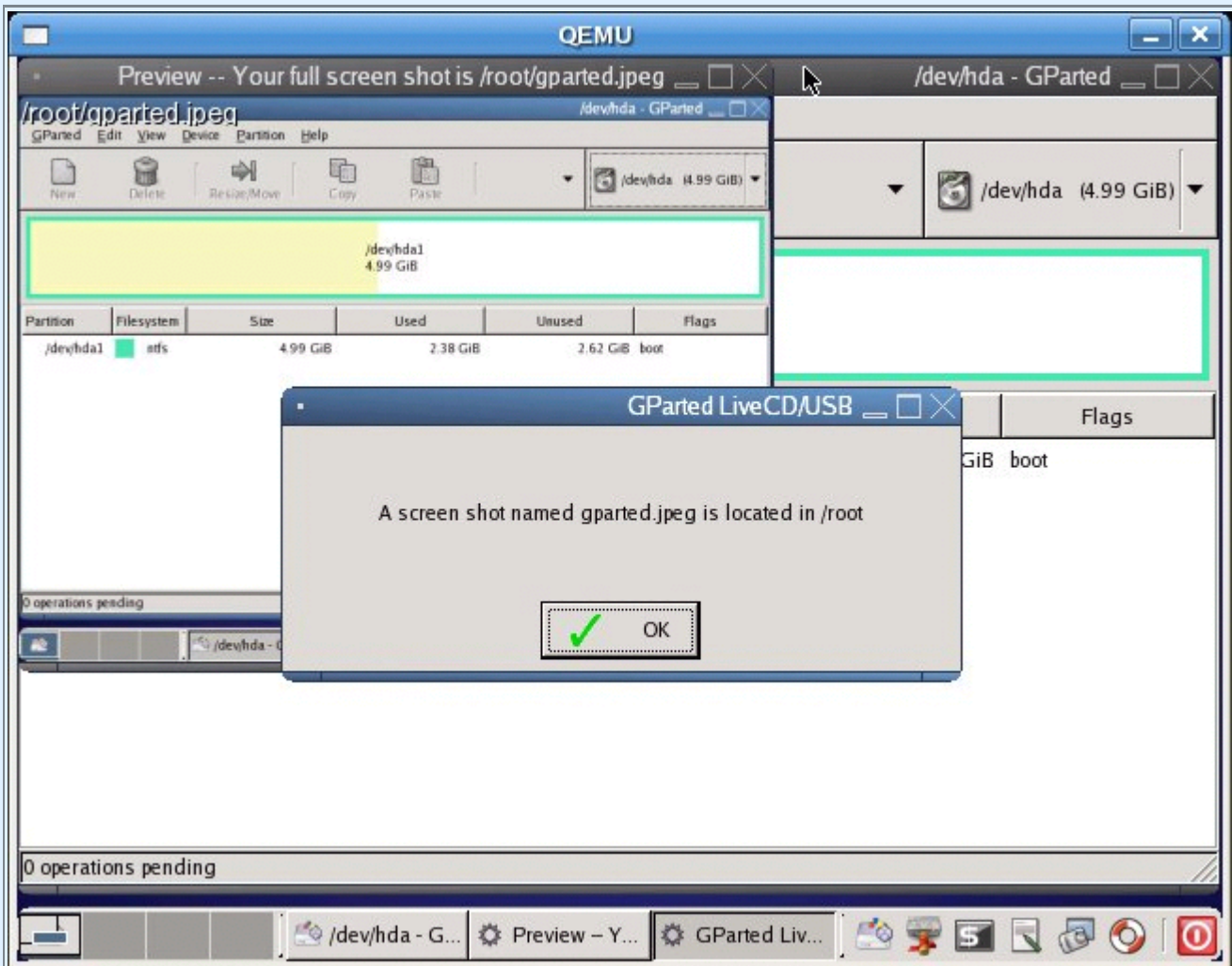


DOING SCREENSHOTS

The easiest way to make screenshots is to use the built-in tool, and click on the icon, like in the picture bellow :



After you click, the screenshot is saved in /root, and appears on the desktop :



If it doesn't work, you always can just open a terminal and run the next command:

```
root@GParted:~# xwd > gparted.dmp
```

Then, switch to the GParted window using the alt+tab keys, and click on the GParted window. It will create a gparted.dmp file in /root. And you may copy it to any drive executing the already described steps. DMP files can be opened with *gimp* or any *imageviewer*.